



WINNEO, REDEFINING PRODUCT LABELING AND PATTERN PRINTING.

LABELING MACHINE

01

Desktop full automatic labeling machine

4. WT-L100-Desktop small production line
5. WT-101-Desktop flat labeling machine
6. WT-102-Desktop flat labeling machine with feeder
7. WT-103-Desktop round bottle positioning labeling machine
8. WT-104-Desktop round bottle labeling machine
9. WT-105-Desktop horizontal round bottle labeling machine

02

Round surface labeling machine

11. WT-201-Semi-automatic round bottle labeling machine
12. WT-202-Full automatic round bottle labeling machine
13. WT-203-Full automatic positioning round bottle labeling machine
14. WT-204-Full automatic horizontal round bottle labeling machine
15. WT-205-High-speed round bottle labeling machine

03

Flat surface labeling machine

17. WT-301-Semi-automatic high-precision flat labeling machine
18. WT-302-Full automatic flat labeling machine with feeder
19. WT-303-Full automatic flat labeling machine
20. WT-304-Full automatic flat labeling machine for both upper and lower plane

04

Corner labeling machine

22. WT-305-Semi-automatic corner labeling machine
23. WT-306-Full automatic corner labeling machine
24. WT-307-Full automatic double corner labeling machine

05

Side labeling machine

26. WT-308-Semi-automatic double side labeling machine
27. WT-309-Full automatic single side labeling machine
28. WT-310-Full automatic double side labeling machine

06

Pre-printed labeling machine

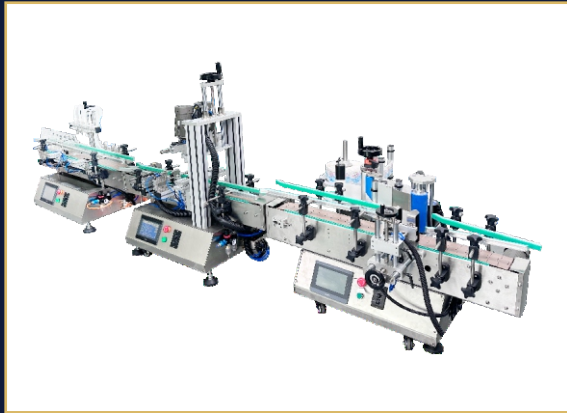
30. WT-401-Pre-printed labeling machine
31. WT-402-Pre-printed weighing printing labeling machine

07

Labeling head for production line

33. WT-501-Upper plane labeling head for production line
34. WT-502-Side labeling head for production line
35. WT-503-Lower plane labeling head for production line

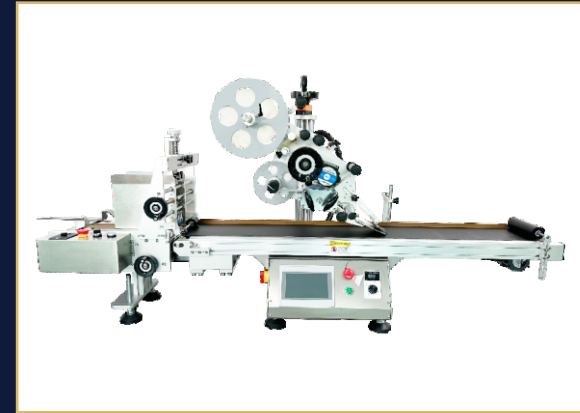
Desktop full automatic labeling machine



WT-L100
Desktop small production line



WT-101
Desktop flat labeling machine



WT-102
Desktop flat labeling machine with feeder



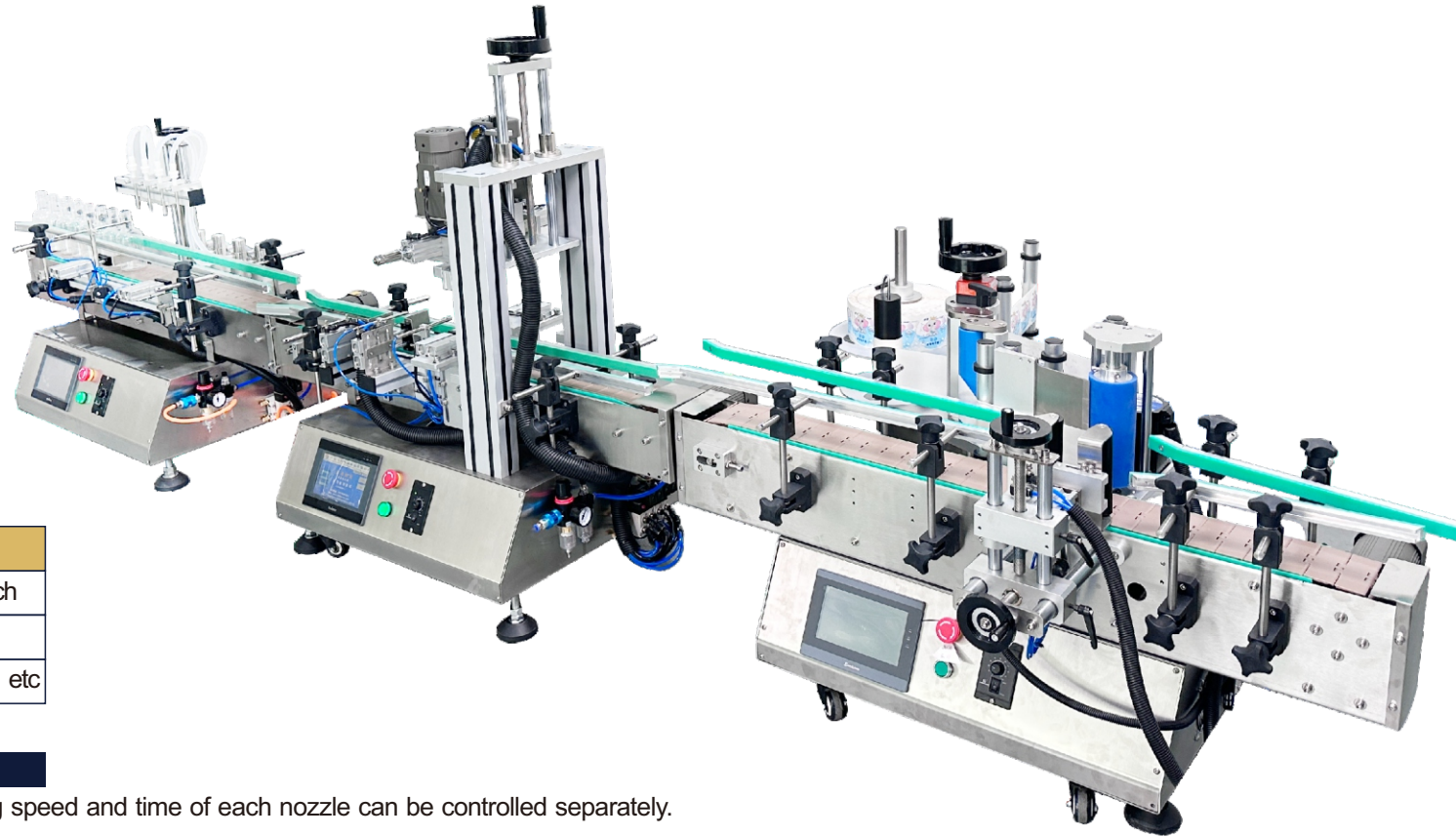
WT-103
Desktop round bottle positioning labeling machine



WT-104
Desktop round bottle labeling machine



WT-105
Desktop horizontal round bottle labeling machine



THE TECHNICAL PARAMETER

Size	149.61 x 38.58 x 42.52 inch
Weight	350 kg
Applicable Industries	Food, Beverage, Chemical etc

FILLING MACHINE

This machine is designed with 2 filling nozzles, the filling speed and time of each nozzle can be controlled separately.

CAPPING MACHINE

Designed for various shapes of bottle caps, like smoke oil bottles, spray bottles, beverage bottle caps. It will press the bottle caps and tight it automatically improve working efficiency greatly.

LABELING MACHINE

These three labeling wheels make bottles rotating and then finish labeling ensure that there is no bubbles under labels. Ensure the labeling effect. This is suitable for double side labeling.

TOUCH SCREEN

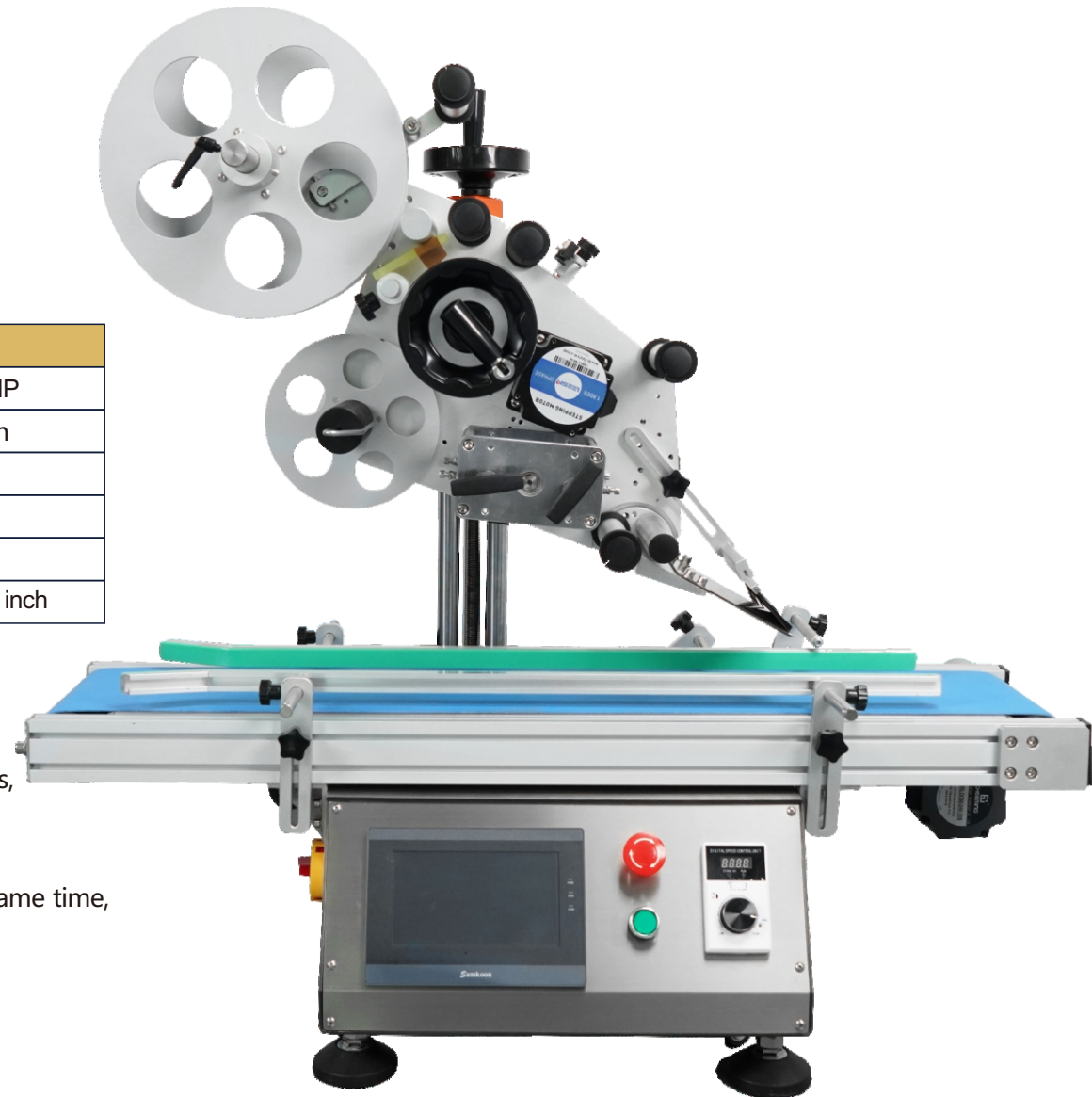
Customizable in multiple languages. More convenient to adjust different kinds of parameter. The visual working date makes the adjustment more accurate.

THE TECHNICAL PARAMETER			
Speed	30-60 pcs/min	Power	500W/0.67HP
Voltage	110V/60HZ	Labeling accuracy	±0.0394 inch
Conveyor belt width	7.874 inch	Conveyor belt height	11.02 inch
Product size	41x26x37 IN	Product weight	184 LB
Package size	43x26x37 IN	Package weight	250 LB
Label length	0.394-11.811 inch	Label width	0.787-3.937 inch

Applicable Products: Plane products. For example: Paper boxes, paper bags, flat bottles, clothes, hang tags, etc.

Advantages: Light weight, small size, fast speed, flat labeling, neat, no bubbles, which make up for the shortcomings of manual labeling.

Compatibility: It is can be compatible with products of different sizes at the same time, and it is easy and convenient to replace products comings of manual labeling.





THE TECHNICAL PARAMETER

Speed	50-200 pcs/min	Power	500W/0.67HP
Voltage	110V/60HZ	Labeling accuracy	±0.0394 inch
Conveyor belt width	9.84 inch	Conveyor belt height	17.717 inch
Product size	52x18x35 IN	Product weight	184 LB
Package size	55x22.8x40 IN	Package weight	250 LB
Label length	0.78-12.59 inch	Label width	0.98-5.05 inch

Application: Food, Beverage, Commodity, Chemical, Machinery & Hardware, APPAREL, Textiles

Packaging Type: box, bag, pouch any flat surface

Packaging Material: Plastic, Paper, Metal, Glass, Wood



THE TECHNICAL PARAMETER

Labeling Accuracy	±1.0mm(excluding product and label errors)
Labeling Speed	15~35 pieces/minute (related to product size)
Applicable Product Diameter	φ25mm ~ φ120mm
Applicable Label Size	Length: 20mm~290mm; Width: 20mm~125mm
Overall Machine Size	Approximately 1197mmx1170mmx791mm (LxWxH)
Applicable Power Supply	220V/50HZ
Overall Machine Weight	Approximately 185Kg
Applicable Label Inner Diameter	φ76mm
Applicable Label Outer Diameter	φ280mm
Voltage	220V
Air Pressure	0.4~0.6Mpa
Power Consumption	750W

Product description: Suitable for labeling the circumference of round bottles. Single or double labels can be applied. The distance between the front and back double labels can be flexibly adjusted. For example, it can be applied to round beverage bottles and round food cans. It is widely used in the cosmetics, food, medicine, disinfectant and other industries. The optional circumference positioning detection device can be used to label at the specified position on the circumference. The optional ribbon printer and inkjet printer can be used to print the production date and batch number information on the label, realizing the integration of labeling and inkjet.

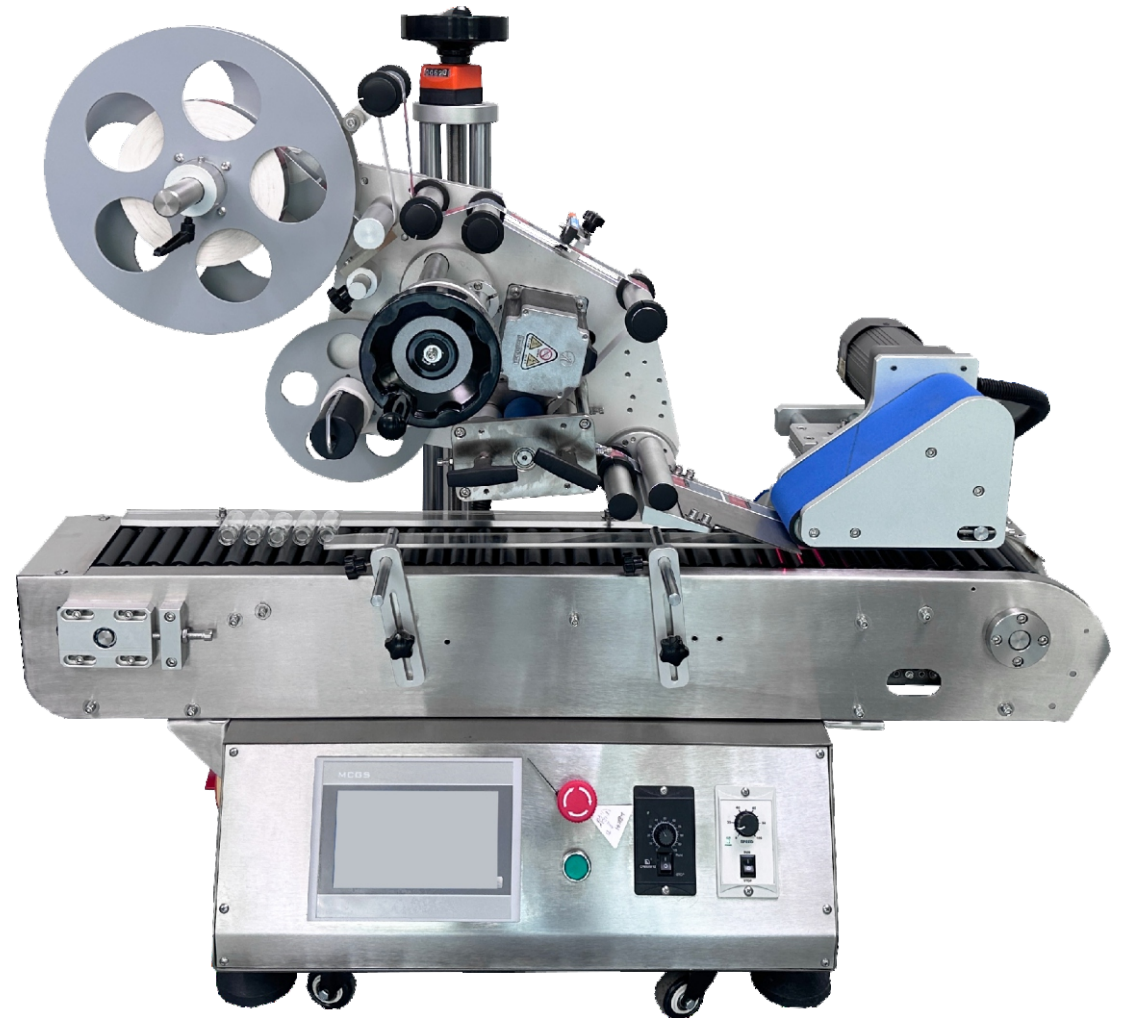


THE TECHNICAL PARAMETER

Labeling Accuracy	±1mm (excluding product and label errors)
Labeling Speed	30~80 pieces/minute (related to product size)
Applicable Product Diameter	φ25mm~φ100mm
Applicable Label Size	Length: 20mm~314mm; Width: 15mm~125mm
Overall Machine Size	Approximately 1197mmx1170mmx791mm (LxWxH)
Applicable Power Supply	220V/50HZ
Overall Machine Weight	Approximately 190Kg
Applicable Label Inner Diameter	φ76mm
Applicable Label Outer Diameter	φ280mm
Voltage	220V
Power Consumption	630W

Product description: Suitable for labeling round bottles in the pharmaceutical, food, daily chemical and other industries. It can label large and semi-circular bottles. Optional automatic turntable bottle unscrambler can be directly connected to the front-end production line to automatically feed bottles into the labeling machine to increase efficiency. Optional ribbon coding labeling machine can print production date and batch number online, reduce bottle packaging procedures and improve production efficiency.

THE TECHNICAL PARAMETER	
Label Specification	adhesive sticker, transparent or opaque
Labeling Tolerance	± 1mm
Capacity(pcs/min)	100 ~300
Suit bottle size(mm)	Ø10~Ø30;Can be customized
Suit label size(mm)	L: 20-250; W(H): 20-110
Machine Size(L*W*H)	≈1240*1160*830 (mm)
Voltage	220V/50(60)HZ;Can be customized
Power	820W
N.W (KG)	≈200
G.W(KG)	≈356



Round surface labeling machine



WT-201

Semi-automatic round bottle labeling machine



WT-202

Full automatic round bottle labeling machine



WT-203

Full automatic positioning round bottle labeling machine



WT-204

Full automatic horizontal round bottle labeling machine



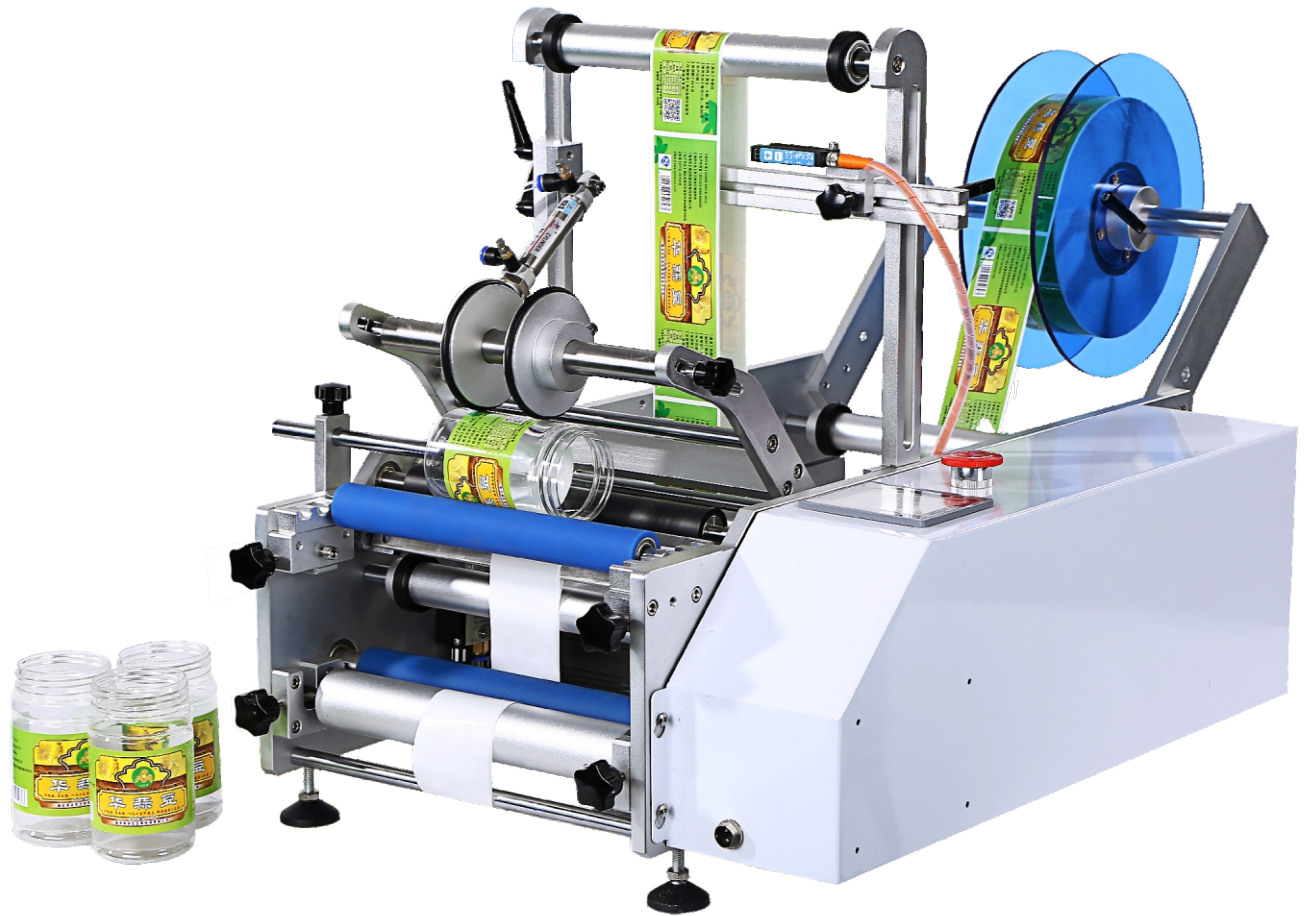
WT-205

High-speed round bottle labeling machine

THE TECHNICAL PARAMETER

Labeling Accuracy	±0.5mm (excluding product and label errors)
Labeling Speed	15~35 pieces/minute (related to product size and manual placement speed)
Applicable Product Diameter	φ15mm~φ100mm (customizable according to actual product size)
Applicable Label Size	Length: 20mm~380mm; Width: 20mm~250mm
Overall Machine Size	Approximately 936mmx534mmx518mm (LxWxH)
Applicable Power Supply	220V/50HZ
Overall Machine Weight	Approximately 55Kg
Applicable Label Inner Diameter	φ76mm
Applicable Label Outer Diameter	φ280mm
Voltage	220V
Power	120W

It is suitable for labeling cylindrical objects of various specifications and small taper round bottles, such as xylitol, cosmetic round bottles, wine bottles, etc. It can realize full/half-circle labeling, front and back labeling of the circle, and the spacing between the front and back labels can be adjusted arbitrarily.





THE TECHNICAL PARAMETER

Labeling Accuracy	±1mm (excluding product and label errors)
Labeling Speed	30~80 pieces/minute (related to product size)
Applicable Product Diameter	φ25mm~φ100mm
Applicable Label Size	Length: 20mm~314mm; Width: 15mm~150mm
Overall Machine Size	Approximately 1931mmx1190mmx1338mm (LxWxH)
Applicable Power Supply	220V/50HZ
Overall Machine Weight	Approximately 350Kg
Applicable Label Inner Diameter	φ76mm
Applicable Label Outer Diameter	φ280mm
Voltage	220V
Power	630W

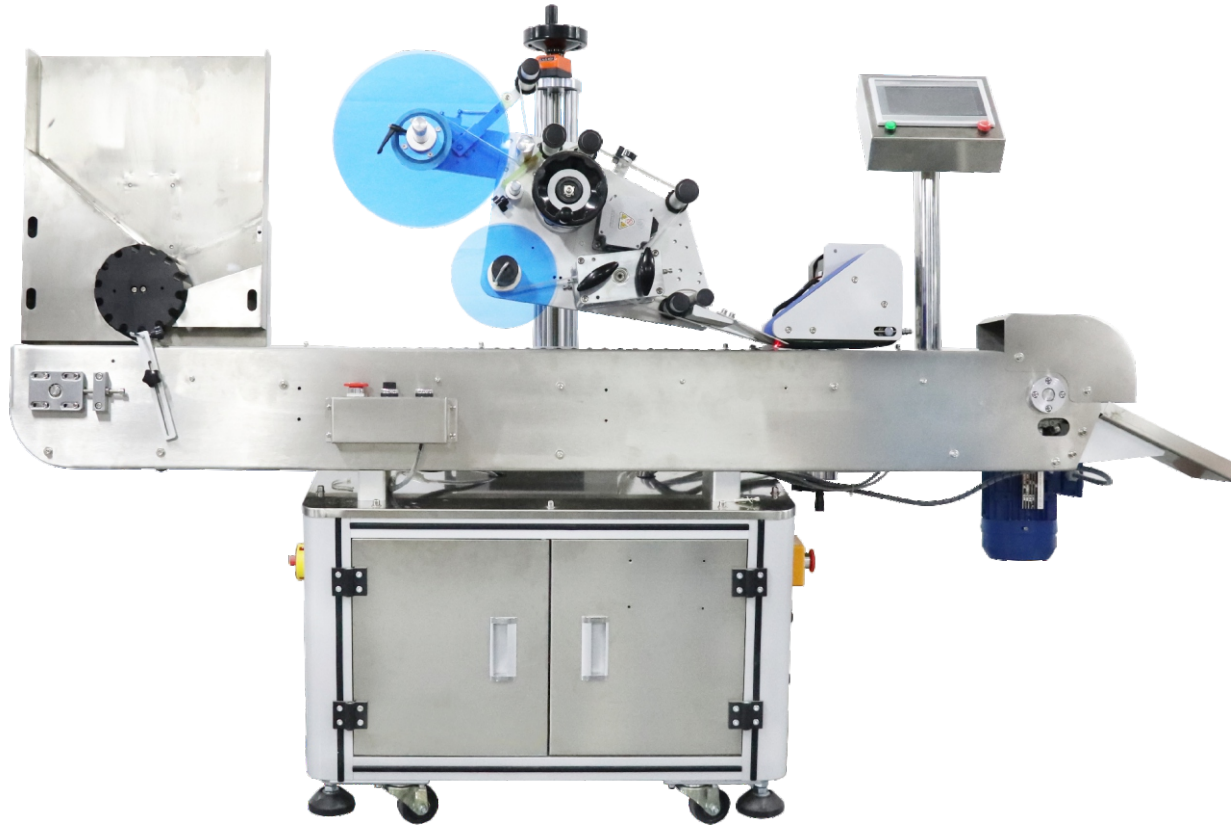
It is suitable for labeling round bottles in the pharmaceutical, food, daily chemical and other industries. It can label large and semi-circular bottles. It can be equipped with an automatic turntable bottle unscrambler, which can be directly connected to the front-end production line to automatically feed bottles into the labeling machine to increase efficiency. It can be equipped with a ribbon coding labeling machine, which can print the production date and batch number online, reduce the bottle packaging process, and improve



THE TECHNICAL PARAMETER

Labeling Accuracy	±1.0mm (excluding product and label errors)
Labeling Speed	25~60 pieces/minute (related to product size)
Applicable Product Diameter	φ25mm~φ120mm
Applicable Label Size	Length: 20mm~290mm; Width: 20mm~150mm
Overall Machine Size	Approximately 1950mmx1200mmx1530mm (LxWxH)
Applicable Power Supply	220V/50HZ
Overall Machine Weight	Approximately 185Kg
Applicable Label Inner Diameter	φ76mm
Applicable Label Outer Diameter	φ280mm
Voltage	220V
Air Pressure	0.4~0.6Mpa
Power	865W

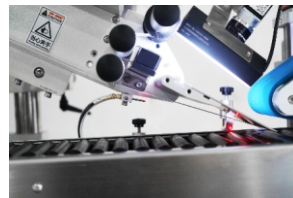
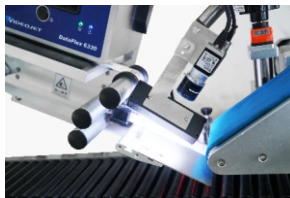
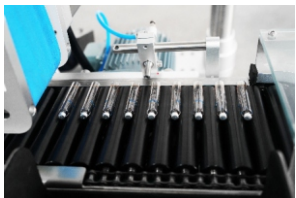
Suitable for round bottle labeling, can do single labeling and double labeling, the labeling position can be adjusted easily. Widely used in cosmetics, food, pharmaceuticals, disinfectant and other industries.



THE TECHNICAL PARAMETER

Labeling Accuracy	±1.0mm (excluding product and label errors)
Labeling Speed	100~300 pieces/minute (related to product size)
Applicable Product Diameter	φ10mm~φ30mm
Applicable Label Size	Length: 20mm~250mm; Width: 20mm~110mm
Overall Machine Size	2100mm x 750mm x 1400mm (LxWxH)
Applicable Power Supply	220V/50HZ
Overall Machine Weight	Approximately 200Kg
Applicable Label Inner Diameter	φ76mm
Applicable Label Outer Diameter	φ280mm
Applicable power supply	220V/940W

It is suitable for labeling the circumference and semicircle of unstable cylindrical objects. It adopts horizontal conveying and horizontal labeling to increase stability and improve labeling efficiency. You can choose to add a printer or inkjet printer to the labeling head to print information such as production date, batch number and barcode on the label. You can choose to add an inkjet printer to the conveyor belt to print information such as production date, batch number,





THE TECHNICAL PARAMETER

Dimension	(L)2400*(W)1350*(H)1380mm
Material size	φ20-50mm
Labeling accuracy	±0.5mm
Speed	100-120pcs/min

It can automatically detect the diameter of the bottle, automatically adjust the parameters, and realize intelligent control. It can be installed with a feeding and receiving device, and can also be directly used with a production line. It is equipped with an automatic detection device, which can effectively prevent problems such as bottle inversion, missing stickers, wrong stickers, and repeated stickers.

Flat surface labeling machine



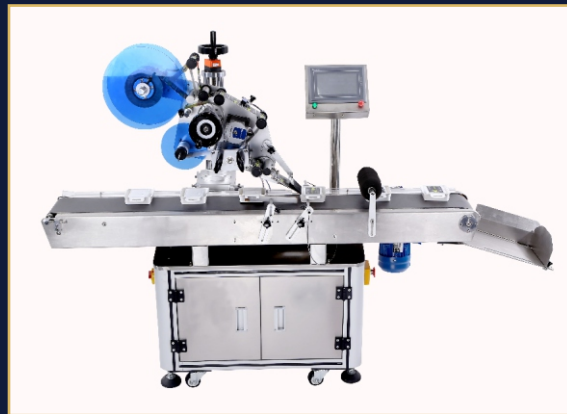
WT-301

Semi-automatic high-precision flat labeling machine



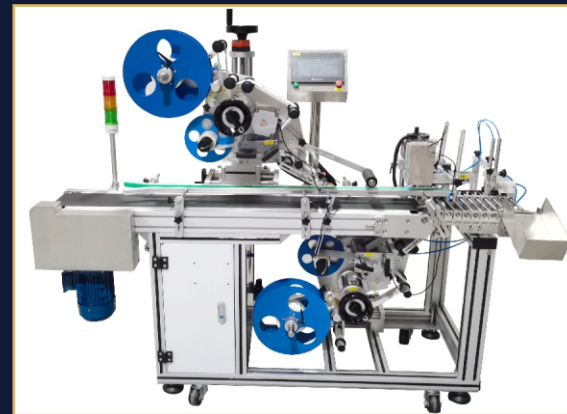
WT-302

Full automatic flat labeling machine with feeder



WT-303

Full automatic flat labeling machine



WT-304

Full automatic flat labeling machine for both upper and lower plane

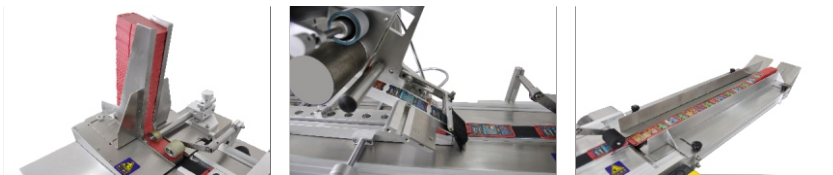
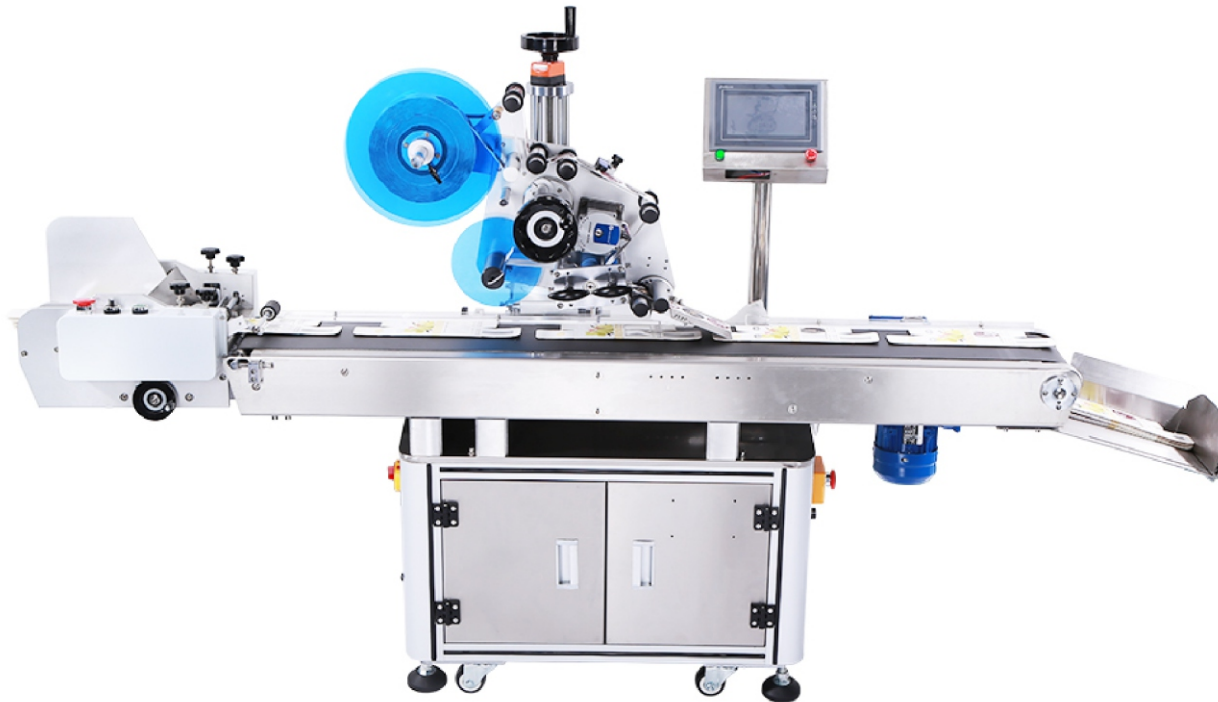


THE TECHNICAL PARAMETER

Labeling Accuracy	±0.2mm (excluding product and label errors)
Labeling Speed	15~30 pieces/minute (related to product size)
Applicable Product Diameter	Length: 20mm~200mm; Width: 20mm~180mm; Thickness: 0.2mm~75mm
Applicable Label Size	Length: 10mm~70mm; Width: 5mm~70mm
Overall Machine Size	Approximately 650mmx530mmx830mm (LxVxH)
Applicable Power Supply	220V/50HZ
Overall Machine Weight	Approximately 41Kg
Applicable Label Inner Diameter	φ76mm
Applicable Label Outer Diameter	φ240mm
Voltage	220V
Air Pressure	0.4~0.6Mpa
Power	330W

Features

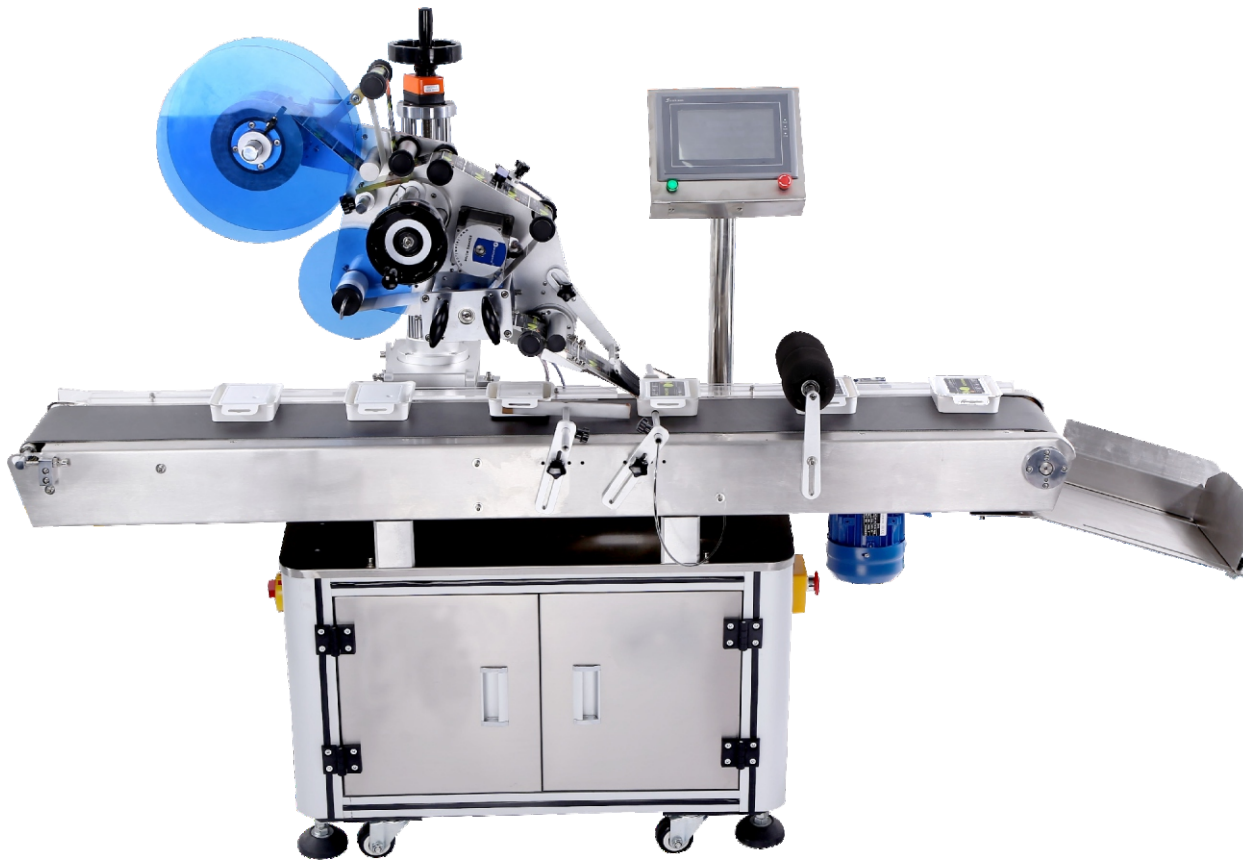
1. Multi-functional right Angle labeling machine, dedicated to 90 degree corner labeling, in order to play the role of sealing, anti-counterfeiting, anti-demolition
2. Mainly used in cosmetics, drugs, electronic products, toys, gifts, drinks, beauty products and other packaging box anti-demolition label;
3. Application fields: daily chemical industry, beauty industry, electronics industry, wearable device industry, toy industry, pharmaceutical industry, beverage industry, e-commerce field, etc.
4. Applicable customers: small, medium and micro enterprises, family



THE TECHNICAL PARAMETER

Labeling Accuracy	±1mm (excluding product and label errors)
Labeling Speed	40~120 pieces/minute (related to product size)
Applicable Product Size	Length: 40mm~400mm; Width: 40mm~250mm; Height: 0.2mm~150mm
Applicable Label Size	Length: 6mm~340mm; Width (Liners Width): 15mm~130mm
Overall Machine Size	Approximately 2200mmx780mmx1400mm (LxWxH)
Applicable Power Supply	220V/50HZ
Overall Machine Weight	Approximately 180Kg
Applicable Label Inner Diameter	φ76mm
Applicable Label Outer Diameter	φ280mm
Voltage	220V
Power	820W

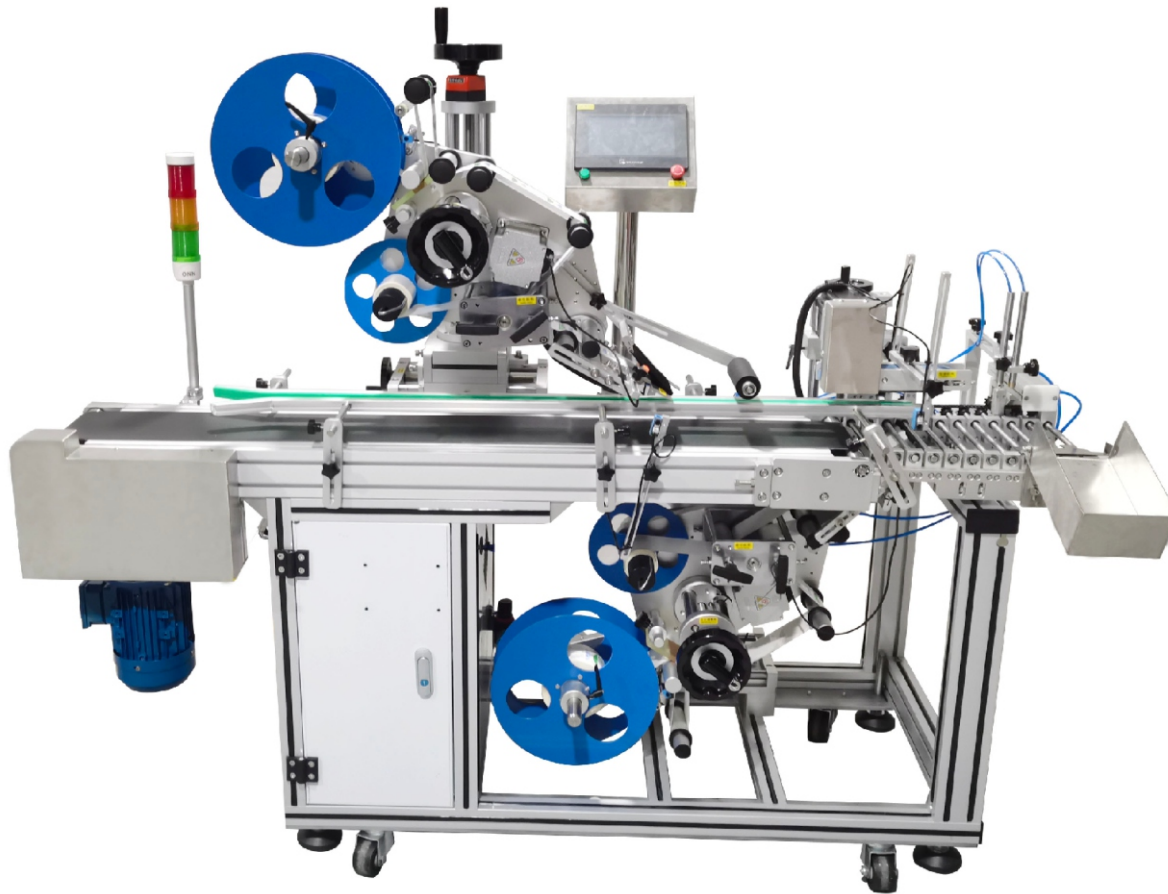
Applicable labels: self-adhesive labels, self-adhesive films, electronic supervision codes, barcodes, etc. Applicable products: products that require labels or films to be attached to flat surfaces or large curved surfaces. Applicable industries: widely used in electronics, hardware, plastics, chemicals and other industries. Application examples: wet wipes bags, wet wipes boxes, flat paper boxes, folder seam labeling, acrylic



THE TECHNICAL PARAMETER

Labeling Accuracy	±1mm (excluding product and label errors)
Labeling Speed	40~120 pieces/minute (related to product size)
Applicable Product Size	Length: 40mm~400mm; Width: 40mm~250mm; Height: 0.2mm~150mm
Applicable Label Size	Length: 6mm~340mm; Width (Liners Width): 15mm~130mm
Overall Machine Size	Approximately 1600mmx780mmx1400mm (LxWxH)
Applicable Power Supply	220V/50HZ
Overall Machine Weight	Approximately 180Kg
Applicable Label Inner Diameter	φ76mm
Applicable Label Outer Diameter	φ280mm
Voltage	220V
Power	700W

It is suitable for labeling or self-adhesive film on the upper surface of various items, such as books, folders, boxes, cartons, etc. Replacing the labeling mechanism can be applied to labeling on uneven surfaces. It is widely used in flat labeling of large products and flat objects with a large specification range. You can choose to add a coder or inkjet printer to the labeling head to print information such as production date, batch number and barcode on the label. You can choose to add an inkjet printer to the conveyor belt to print information such as production date, batch number,



THE TECHNICAL PARAMETER

Labeling Accuracy	± 1mm (excluding product and label errors)
Labeling Speed	40~120 pieces/minute (related to product size)
Applicable Product Size	Length: 40mm~400mm; Width: 40mm~250mm; Height: 0.2mm~150mm
Applicable Label Size	Length: 6mm~340mm; Width (Liners Width): 15mm~130mm
Overall Machine Size	Approximately 1600mmx780mmx1400mm (LxWxH)
Applicable Power Supply	220V/50HZ
Overall Machine Weight	Approximately 180Kg
Applicable Label Inner Diameter	φ76mm
Applicable Label Outer Diameter	φ280mm
Voltage	220V
Power	700W

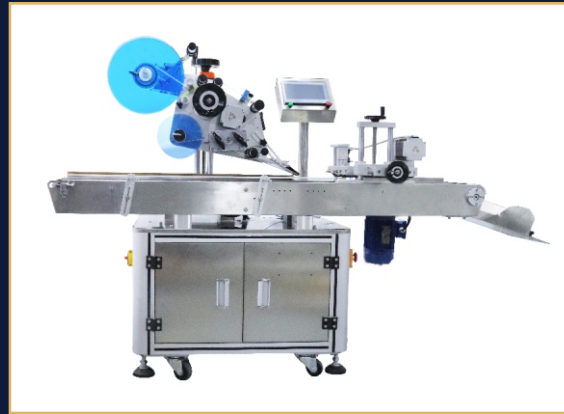
It is suitable for labeling or self-adhesive films on the flat surfaces of various items, such as memory sticks (USB), plugs, plastic sheets, parts, etc. By replacing the labeling mechanism, it can be applied to labeling on uneven surfaces. It is widely used in flat labeling of small and medium-sized products and

Corner labeling machine



WT-305

Semi-automatic corner labeling machine



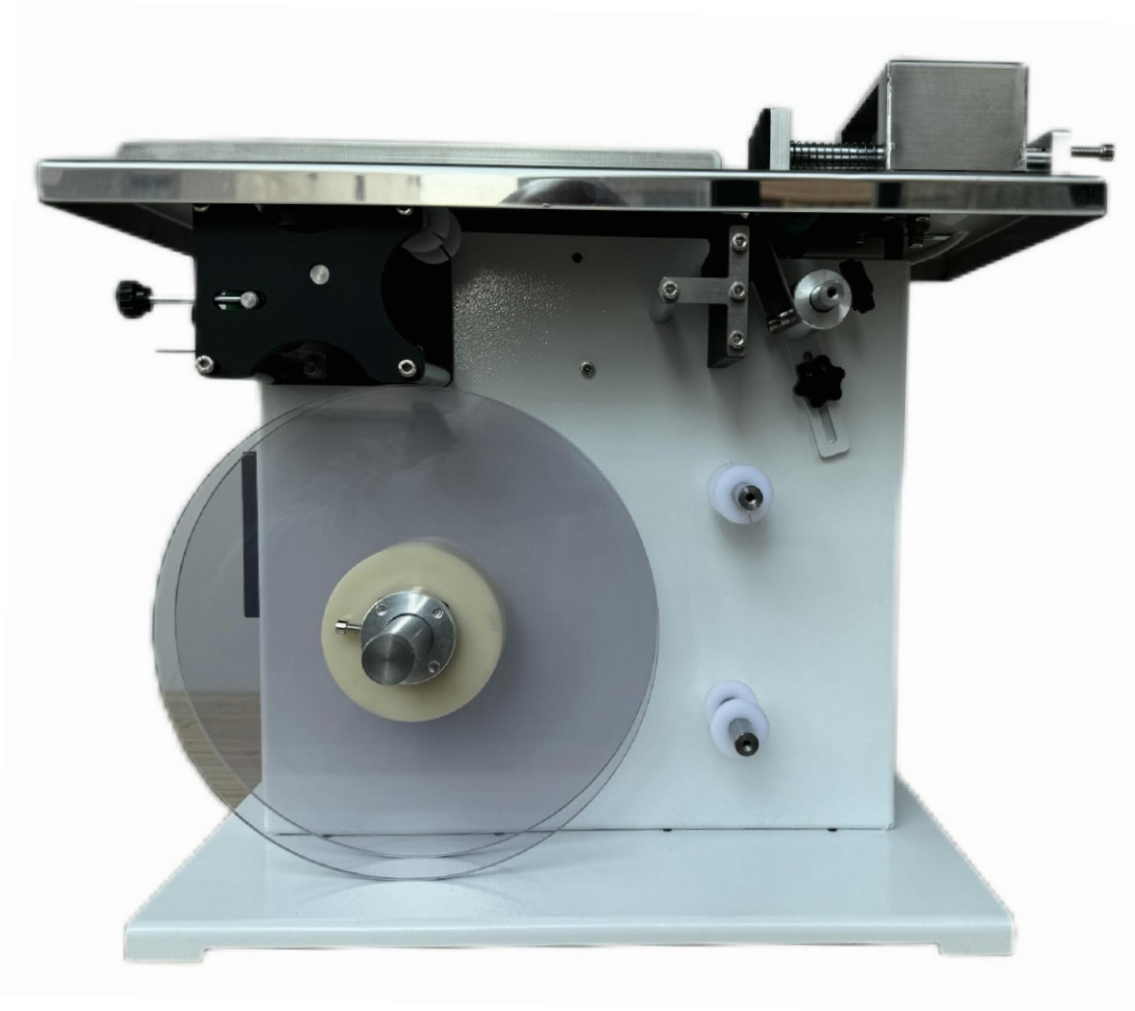
WT-306

Full automatic corner labeling machine



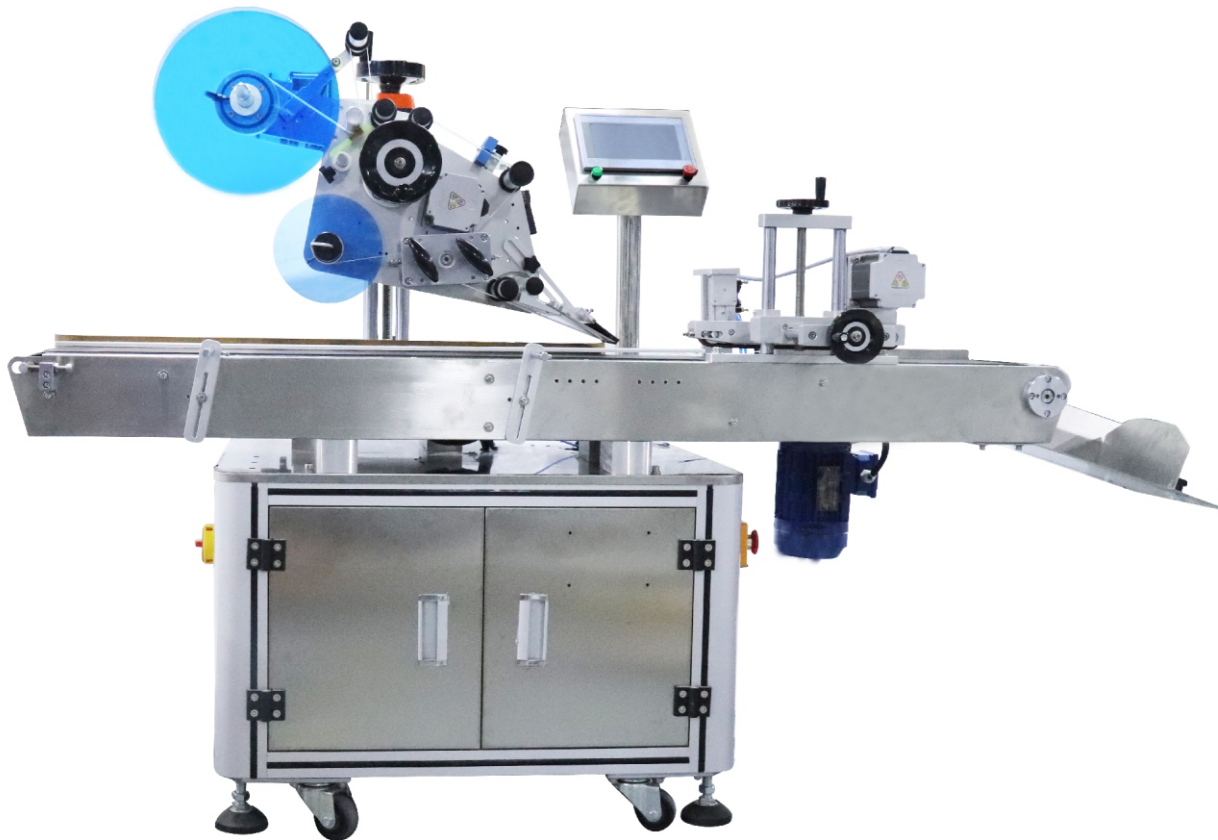
WT-307

Full automatic double corner labeling machine



THE TECHNICAL PARAMETER

Parameter Name	Multi-functional corner labeling machine
Labeling Accuracy	350mm(L)*200mm(W)*350(H)
Labeling Speed	Labeling Speed
Applicable label range	18mm–50mm
Applicable roll diameter	outer:200mm; inner:76mm
Applicable label volume range	Outer diameter:200mm; Inner diameter:75mm)
Labeling Speed	35--90pcs/min(Practical proficiency is related)
labeling Accuracy	±0.5MM
Machine Weight	10KG



THE TECHNICAL PARAMETER

Applicable Product Size (Length x Width x Height/Thickness)	Length: 20mm~300mm; Width: 20mm~200mm; Height: 10mm~100mm
Labeling Accuracy (mm)	±1mm
Labeling Speed (pcs/min)	40~65 pcs/min
Weight (kg)	Approximately 160kg
Frequency (HZ)	50HZ
Voltage (V)	220V
Power (W)	1030W
Equipment Outer Dimensions (mm) (Length x Width x Height)	1700x1200x1350

Used for labeling on box corner, labeling on box upper plane, box side corner, tamper evident. It is mainly used for poker, electronic packing box, cosmetic packing box and all tamper evident box labeling.



THE TECHNICAL PARAMETER

Applicable Product Size (Length x Width x Height/Thickness)	Length: 20mm~300mm; Width: 20mm~250mm; Height: 10mm~100mm
Labeling Accuracy (mm)	± 1mm
Labeling Speed (pcs/min)	40~80 pcs/min
Weight (kg)	Approximately 160kg
Frequency (HZ)	50HZ
Voltage (V)	220V
Power (W)	1030W
Equipment Outer Dimensions (mm) (Length x Width x Height)	1700x1200x1350
Air Pressure (Mpa)	0.4~0.6Mpa

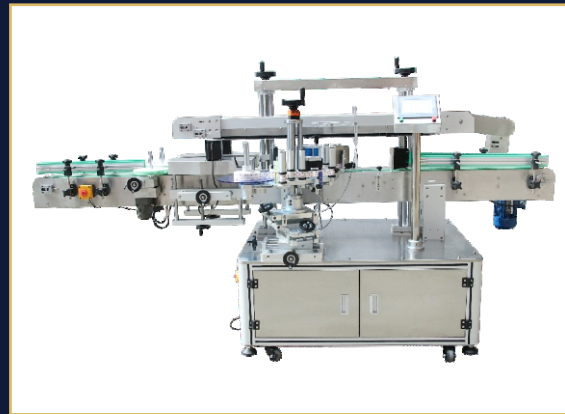
Used for labeling on box corner, labeling on box upper plane, box side corner, tamper evident, it is mainly used for poker, electronic packing box, cosmetic packing box and all tamper evident box labeling.

Side labeling machine



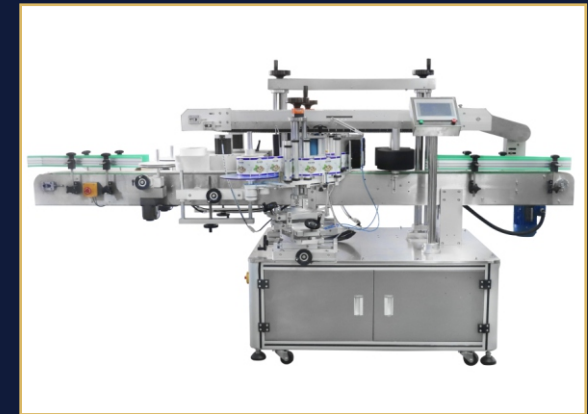
WT-308

Semi-automatic double side labeling machine



WT-309

Full automatic single side labeling machine



WT-310

Full automatic double side labeling machine



THE TECHNICAL PARAMETER

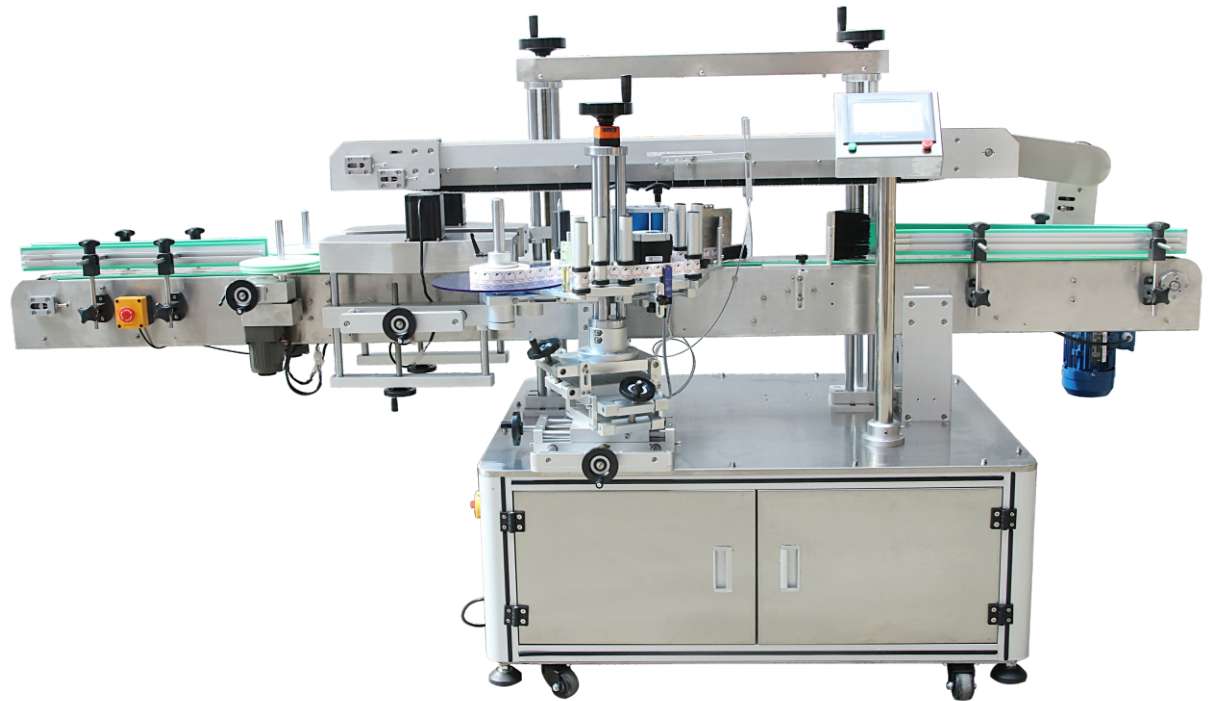
Labeling Accuracy	±0.5mm (excluding product and label errors)
Labeling Speed	15~30 pieces/minute (related to product size)
Applicable Product Diameter	Length: 20mm~200mm; Width: 20mm~150mm; Height: 40mm~120mm
Applicable Label Size	Length: 15mm~110mm; Width: 15mm~110mm
Overall Machine Size	Approximately 1300mm x 1200mm x 1400mm (LxWxH)
Applicable Power Supply	220V/50HZ
Overall Machine Weight	Approximately 185Kg
Applicable Label Inner Diameter	φ76mm
Applicable Label Outer Diameter	300mm
Power	990W

Apply suction labeling to achieve labeling on the side of various workpieces, such as cosmetic flat bottles, packaging boxes, plastic side labeling, etc. Change the labeling mechanism to apply labeling on uneven surfaces, such as concave planes and arc surfaces. Change the fixture to apply labeling on various irregular workpieces. Optional ribbon printer or inkjet printer to print the production date and batch number on the label to achieve integrated coding and

THE TECHNICAL PARAMETER

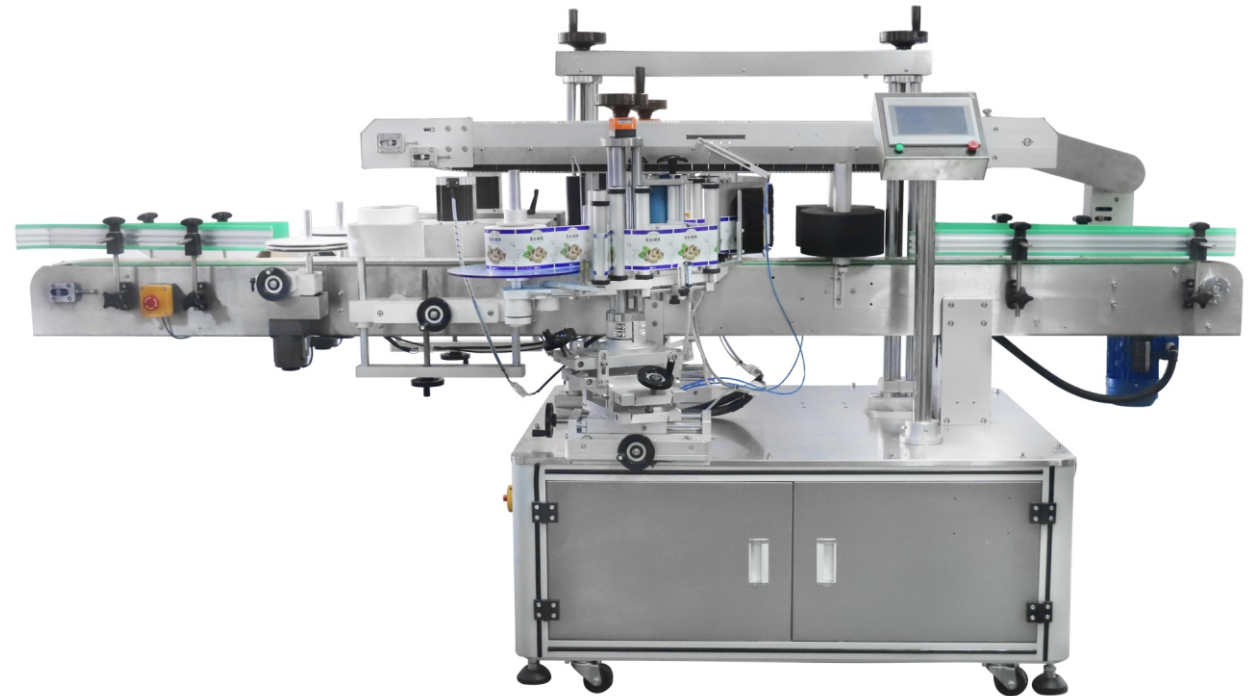
Labeling Accuracy	± 1mm (excluding product and label errors)
Labeling Speed	40~120 pieces/minute (related to product size)
Applicable Product Size	40-400mm x 40-200mm x 40-150mm (Length x Width x Height)
Suitable Label Size	L6-250mm x W 15-120mm (Length x Width)
Applicable Standard Roll Inner Diameter	φ76mm
Applicable Standard Roll Outer Diameter	φ300mm
Applicable Power Supply	220V/50Hz/1740W
Device Dimensions	3100x1200x1560mm
Weight	Approximately 300kg

Suitable for paste adhesive sticker on flat/round products' side surface. Such as books,file folder,box,paper carton,etc. Modifying the labeling head,it also can be used to labeling on uneven surface,concave surface, arc surface and so on. Widely used in big size flat products.



THE TECHNICAL PARAMETER

Applicable Label Length (mm)	20mm~200mm
Applicable Label Width (Liners Width/mm)	20mm~160mm
Applicable Product Size (Length x Width x Height/Thickness)	40~65 pcs/min
Width (Conveying Width Direction)	30mm~90mm
Height	60mm~280mm
Applicable Label Roll Outer Diameter (mm)	φ280mm
Applicable Label Roll Inner Diameter (mm)	φ76mm
Labeling Accuracy (mm)	±1.0mm
Out Labeling Speed (m/min)	Stepper: 5~19m/min; Servo: 5~40m/min
Labeling Speed (pcs/min)	Stepper: 30~160pcs/min Servo: 40~180pcs/min
Conveying Speed (m/min)	16m/min
Weight (kg)	Approximately 330kg
Applicable Label Roll Inner Diameter (mm)	φ76mm
Frequency (HZ)	50HZ
Voltage (V)	220V
Power (W)	1100W (Tractive Stepper) 1600W (Tractive Servo)
Equipment Outer Dimensions (mm) (Length x Width x Height)Conveying Speed (m/min)	3000mm x 1450mm x 1600mm
Power (W)	2070W



It is suitable for single-sided and double-sided labeling of flat bottles, round bottles and square bottles, such as shampoo flat bottles, lubricating oil flat bottles, hand sanitizer round bottles, etc. Double-sided labeling can improve production efficiency and is widely used in daily chemical, cosmetics, petrochemical, pharmaceutical and other industries.

Pre-printed labeling machine



WT-401

Pre-printed labeling machine



WT-402

Pre-printed weighing printing labeling machine



THE TECHNICAL PARAMETER

Applicable label width	20mm—100mm
Applicable label length	10mm—300mm
Applicable product size	Based on actual product
Labeling speed	50—200pcs/minutes
Labeling accuracy	+1mm to -1mm
Machine size	1110 mm×900 mm×1650mm
Weight	70Kg



THE TECHNICAL PARAMETER

Labeling accuracy	3mm (excluding product and label errors)
Labeling speed	20 pieces/minute
Applicable product size	500x280mm (length x width)
Applicable label size	120x100mm (length x width)
Applicable power supply voltage/power	220V/50hz/800W
Weighing range	3g~5000g
Weighing accuracy	± 2-3g
Table size buffer section	700x 300mm (length x width)
Total weight	about 100K

Pre-printed labeling machine



WT-501

Upper plane labeling head for production line



WT-502

Side labeling head for production line



WT-503

Lower plane labeling head for production line



THE TECHNICAL PARAMETER

Applicable Label Length (mm)	10mm-250mm
Applicable Label Width (Liners Width/mm)	10mm-120mm
Applicable Product Size (Length x Width x Height/Thickness)	No specific requirements (depends on the conveyor parameters)
Applicable Label Roll Outer Diameter (mm)	φ 240mm
Applicable Label Roll Inner Diameter (mm)	φ 76mm
Labeling Accuracy (mm)	± 1mm
Labeling Speed (pcs/min)	Stepper: 30-160pcs/min Servo: 40-180pcs/min
Weight (kg)	Approximately 70kg
Frequency (HZ)	50HZ
Voltage (V)	220V
Power (W)	330W
Equipment Outer Dimensions (mm) (Length x Width x Height)	1100mm x 700mm x 1450mm

Can be installed on assembly line, labeling on upper plane and cambered surface of flowing objects. Optional inkjet machine to conveyor to print production date, batch number, and expiry date before or after labeling.



THE TECHNICAL PARAMETER

Applicable Label Length (mm)	10mm~250mm
Applicable Label Width (Liners Width/mm)	10mm~120mm
Applicable Label Roll Outer Diameter (mm)	φ280mm
Applicable Label Roll Inner Diameter (mm)	φ76mm
Labeling Accuracy (mm)	± 1mm
Labeling Speed (pcs/min)	Stepper: 40~150pcs/min Servo: 50~200pcs/min
Weight (kg)	Approximately 70kg
Frequency (HZ)	50HZ
Voltage (V)	220V
Power (W)	330W
Equipment Outer Dimensions (mm) (Length x Width x Height)	800mm x 700mm x 1450mm

It can be matched with the production line to label the products passing through on the side, thus realizing online labeling. For example, it can be matched with the inkjet conveyor belt to label the objects passing through.

THE TECHNICAL PARAMETER	
Labeling accuracy	±1mm(excluding product and label errors)
Labeling speed	30~100 pieces/minute (related to product and label size)
Applicable product size	no requirement (depends on assembly line conveying parameters)
Applicable label size	Length (mm): 10mm-200mm Bottom paper width (mm): 10mm-150mm
Overall machine size	Customized as required
Applicable power supply	Applicable power supply: 220V/50HZ

